

KLM interiors

kari demand, R.I.D.

featured in *Mountain Living*

ml | editor's letter



How do you choose an architect or interior designer? When you think about it, you're asking this person to take on a very personal task. You're asking him or her to create your home, that one place that reflects you—who you are, what you love, the way you choose to spend your time. It's funny that we so often hire someone else to take on such a personal endeavor. Maybe that's why it's so magical when the person we choose creates a space that is so "us" in every way.

So how do you find that person? Sure, you can create a list of questions a mile long—and get great answers to them all—and gather piles of references and recommendations, but when it comes down to it, isn't it really a gut feeling?

I've looked at thousands of homes over the years, and while I've seen many designs I've loved, there are a special few that stand out in my mind; places where I can imagine living every day. It wasn't just the setting or the finishes or furnishings that appealed to me. It was something less tangible. I felt that if I were to meet the architect or designer who created the space, he or she would really "get" me—and my idea of home.

It seems that I'm not alone. For the past five years, we've published an annual list of Top Mountain Architects & Interior Designers, and every year we hear from many of you who visit the website of each and every firm on that list. You pore over thousands of photos until you find that architect or interior designer whose work speaks to you. And that's the person you hire.

In this issue, we're proud to present the fifth edition of Top Mountain Architects & Interior Designers, our exclusive guide to the design pros we've featured in the pages of *Mountain Living* over the years—as well as those whose work we know and admire.

But this issue is about more than a list. It's about celebrating all of the design professionals who have taken the time to really understand us; to get at what makes us tick, give it form and bring it to life. It's magic, indeed.

Best wishes,

Christine

CHRISTINE DEORIO, EDITOR IN CHIEF
cdeorio@mountainliving.com

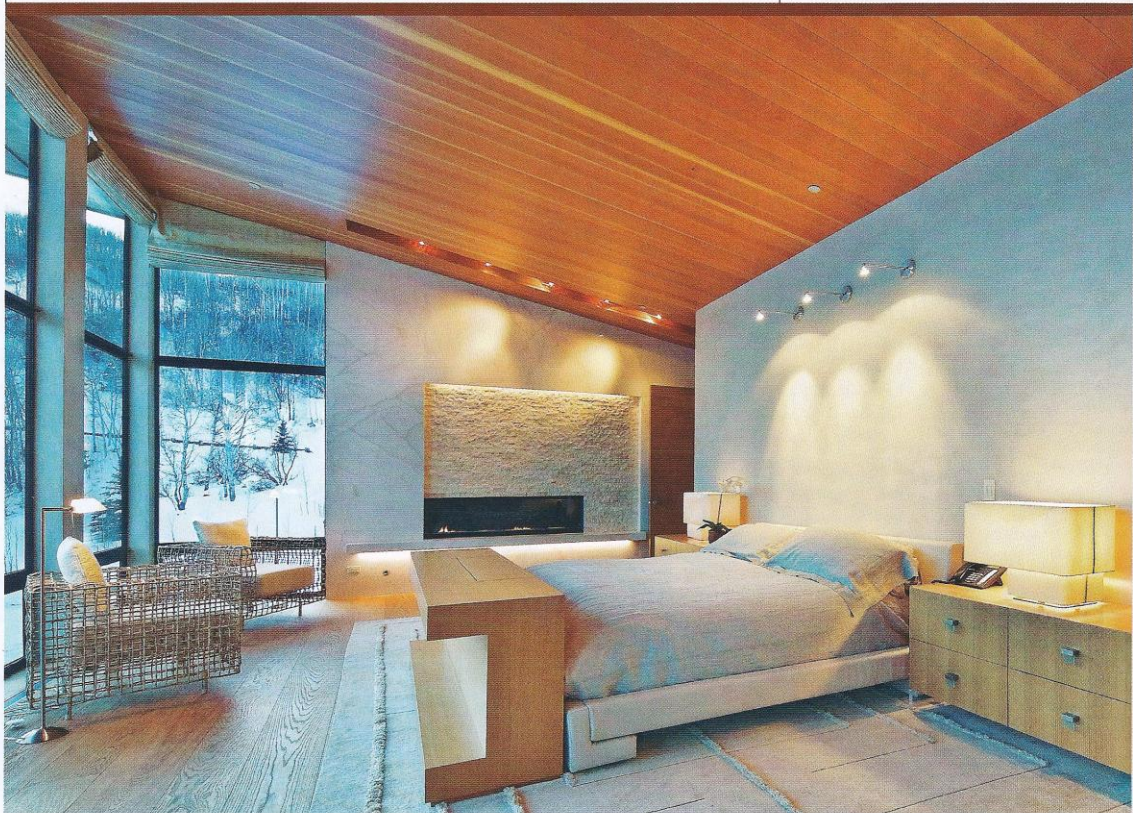
KLM interiors

kari demand, R.I.D.

featured in *Mountain Living*

top mountain interior designers

Robyn Scott Interiors



Inner Design

970-925-4310
309-K Aspen Business
Center
Aspen, CO 81611

Interiors with Oohs & Aahs

435-655-0134
interiors-oohsandaahs.com
1351 Kearns Boulevard
Park City, UT 84060

Jeffrey P. Elliott Interior Design

303-860-0109
jeffreypelliott.com
303 S. Broadway,
Suite B-342
Denver, CO 80209

Jennifer Hoey

Interior Design
208-726-1561
jenniferhoey.com
333 S. Main,
Suite 206
Ketchum, ID 83340

JH Todd Interior Design

970-920-4303
jhtodd.com
220 W. Main Street
Aspen, CO 81611

Jiun Ho

415-437-2284
jiunho.com
322 Sixth Street, Suite 6
San Francisco, CA 94103

John Bossard Design

704-335-0220
johnbossard.com
1300 Queens Road
Studio 410
Charlotte, NC 28207

KAA Design Group

310-821-1400
kaadesigngroup.com
4201 Redwood Avenue
Los Angeles, CA 90066

Karen White Interior Design Inc.

970-963-0690
p.o. Box 3404
karenwhiteid.com
Basalt, CO 81621

Keira Ritter Design Co.

303-442-3252
krdesignco.com
1720 15th Street
Boulder, CO 80302

Kenneth Brown Design

323-525-0204
kennethbrowndesign.com
5619 W. Fourth Street,
Studio 8
Los Angeles, CA 90036

Ken Pieper & Associates

303-670-0619
kenpieper.com
P.O. Box 1569
Evergreen, CO 80437

KLM Interiors

512-458-8081
klminterior.com
4704 Island Cove
Austin, TX 78731

Laurie Waterhouse Interiors

307-732-0130
laurieinteriors.com
90 E. Pearl Avenue
Jackson, WY 83001

Locati Interiors

406-587-1139
locatiarchitects.com
1007 E. Main Street,
Suite 202
Bozeman, MT 59715